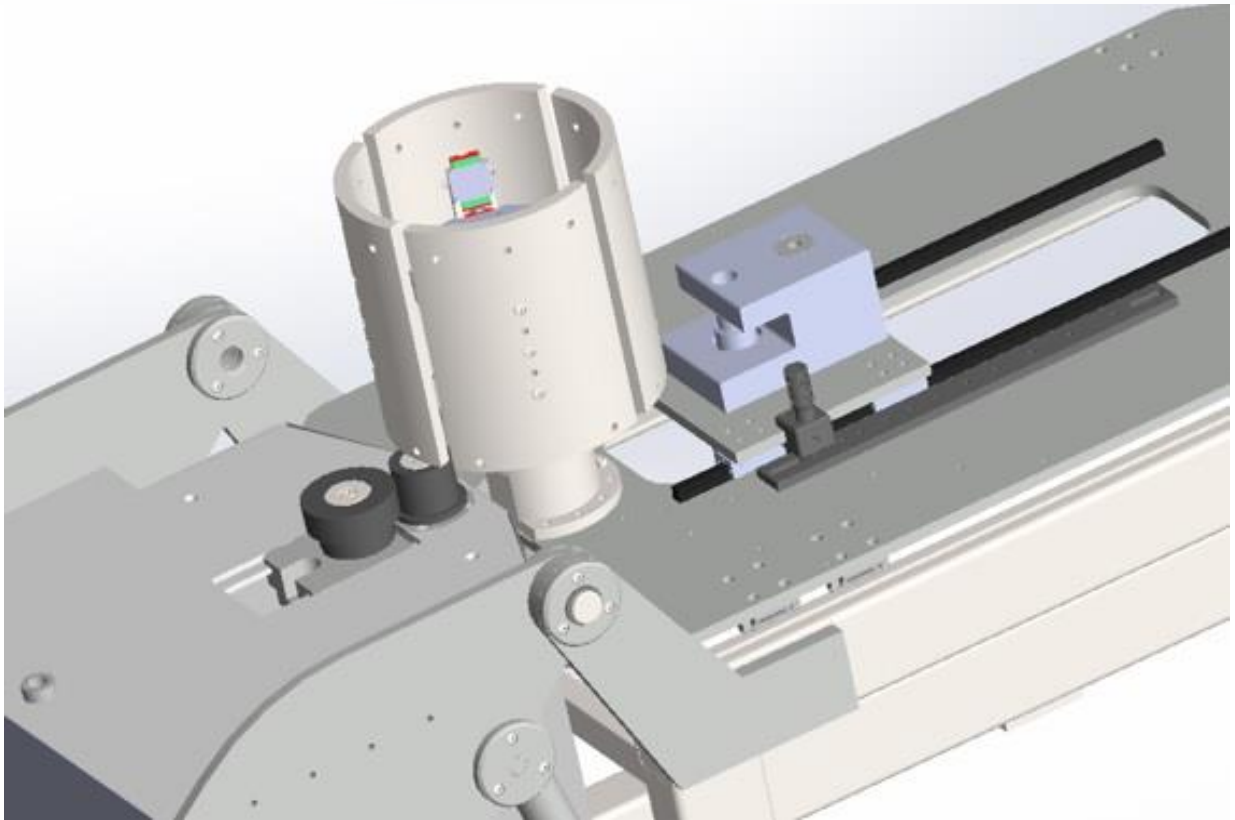
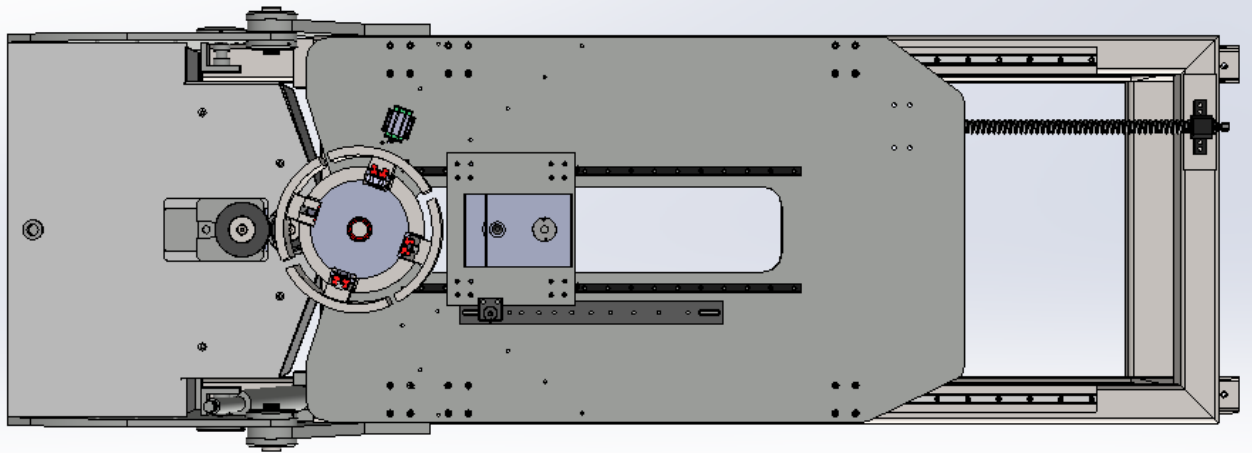
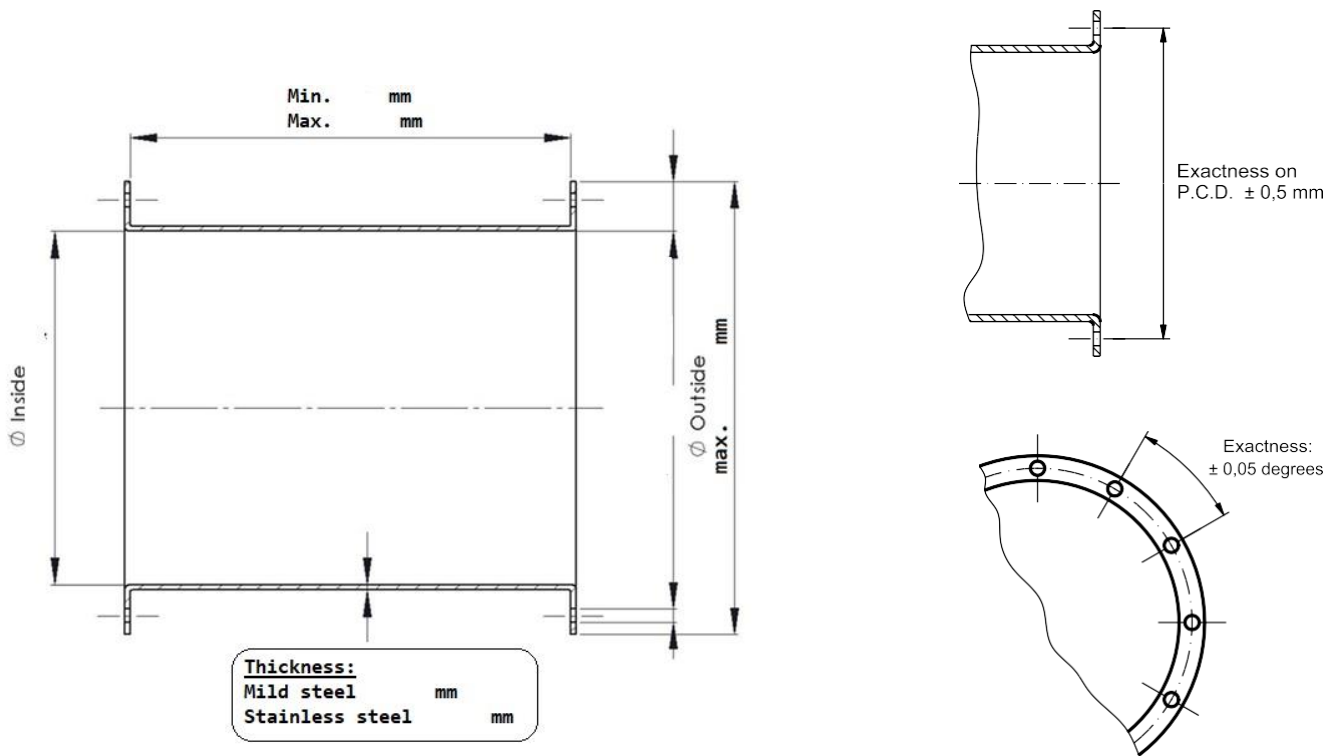


Hydraulic, Automatic Flange Forming Machine (FBM)





Technical specifications for axial ventilators and filter

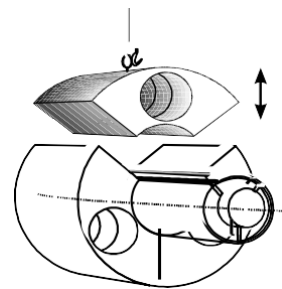
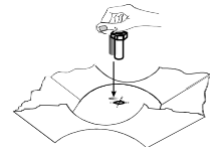


Machine description

Expander:

Double-acting expander:

- Can expand, so it can hold cylindrical ducts and flanges.
- Can become smaller, so it can hold plane plates and conic ducts.
- **Fast change.**
- Possible to mount holding device for square plates.
- Expander works with forces up to 800 kN.
- Heavy special-built expander segments.
- Easy mounting of expander segments.



Controlling:

Machine type FBM is:

- fully automatic and hydraulic.
 - controlled by a PLC (Programmed Logic Controller) connected to a PC.
-
- equipped with an absolute encoder.

Hydraulic, Automatic Flange Forming Machine w/Punching System

Standard Specifications & Equipments

- » Automatic operation with NC automation.
- » Siemens PLC.
- » Siemens 7" touch screen.
- » Memory.
- » 9,75 kW motor.
- » Hydraulic punching system for changeable hole pieces and diameters.
(Hole Capacity is from 4 PCS to 48 PCS)
- » Automatic flange forming.
- » Adjustable flanging speed according material diameter.
- » Rotation of flange rolls powered by hydraulic motor and gear rotation.
- » Induction hardened flange rolls.
- » Material squaring system.
- » Adjustable flange angle with the manual sensor movement.
- » Hydraulic punching system for changeable hole diameters.
- » Steel construction frame.
- » Mobile control panel.
- » Servo motor: Siemens (Germany)
- » CE Norm

Optional Specifications & Equipments

- » Changeable material holder dies for different diameters.
- » Punching dies for different diameters.
- » Metal guarding.
- » 1-sided light curtain.
- » Automatic punching system. (» Changeable distance feature for punching by servo motor SIEMENS .)

Advantages of a Binmak Flanging machine

- Long lifetime
- Great reliability.
- Short time for change-over.
- High-speed-production.
- User-friendly and quiet.
- Easy operation.
- Produces bellmouths after program.

High quality products to your specifications:

- Plane surface.
- Small load on the welding seam.
- Small tip clearance mean higher efficiency and less noise.
- No narrowing.
- The duct is being held exactly round during the working-process, which causes exactly round flanges.

